

Ulcombe Gardens, Canterbury, Kent, CT2 7QY

£1,300 Per Month



Ulcombe Gardens

Canterbury, Kent CT2 7QY

Welcome to this charming end-terrace family house located in Ulcombe Gardens. This delightful property boasts three spacious double bedrooms, making it an ideal home for families seeking comfort and convenience.

As you enter, you are greeted by a welcoming entrance hallway that leads to a convenient downstairs WC. The heart of the home is the open-plan kitchen and sitting room, which is well-equipped with essential white goods and features a lovely breakfast area, perfect for casual dining. Adjacent to this space is a separate dining room, which benefits from patio doors that open directly onto the pretty enclosed rear garden, creating a seamless connection between indoor and outdoor living.

Upstairs, you will find three generously sized double bedrooms, providing ample space for relaxation and rest. The family bathroom is thoughtfully designed, featuring a shower over the bath, catering to both quick showers and leisurely baths.

The property also benefits from an open-plan front garden and offers plenty of off-street parking nearby, ensuring convenience for you and your guests.

This lovely home is perfect for those looking for a blend of modern living and outdoor space, all within a friendly neighbourhood. Don't miss the opportunity to make this delightful property your new family home.

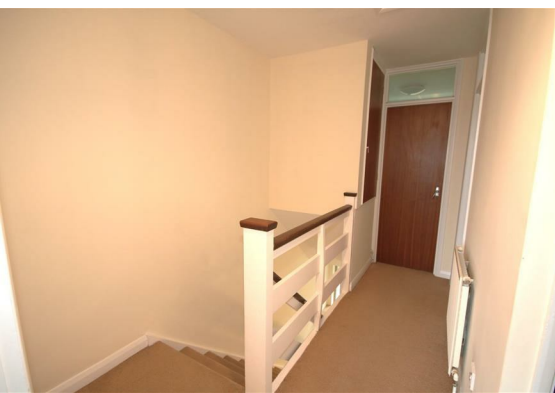
Rent is £1,300 per month



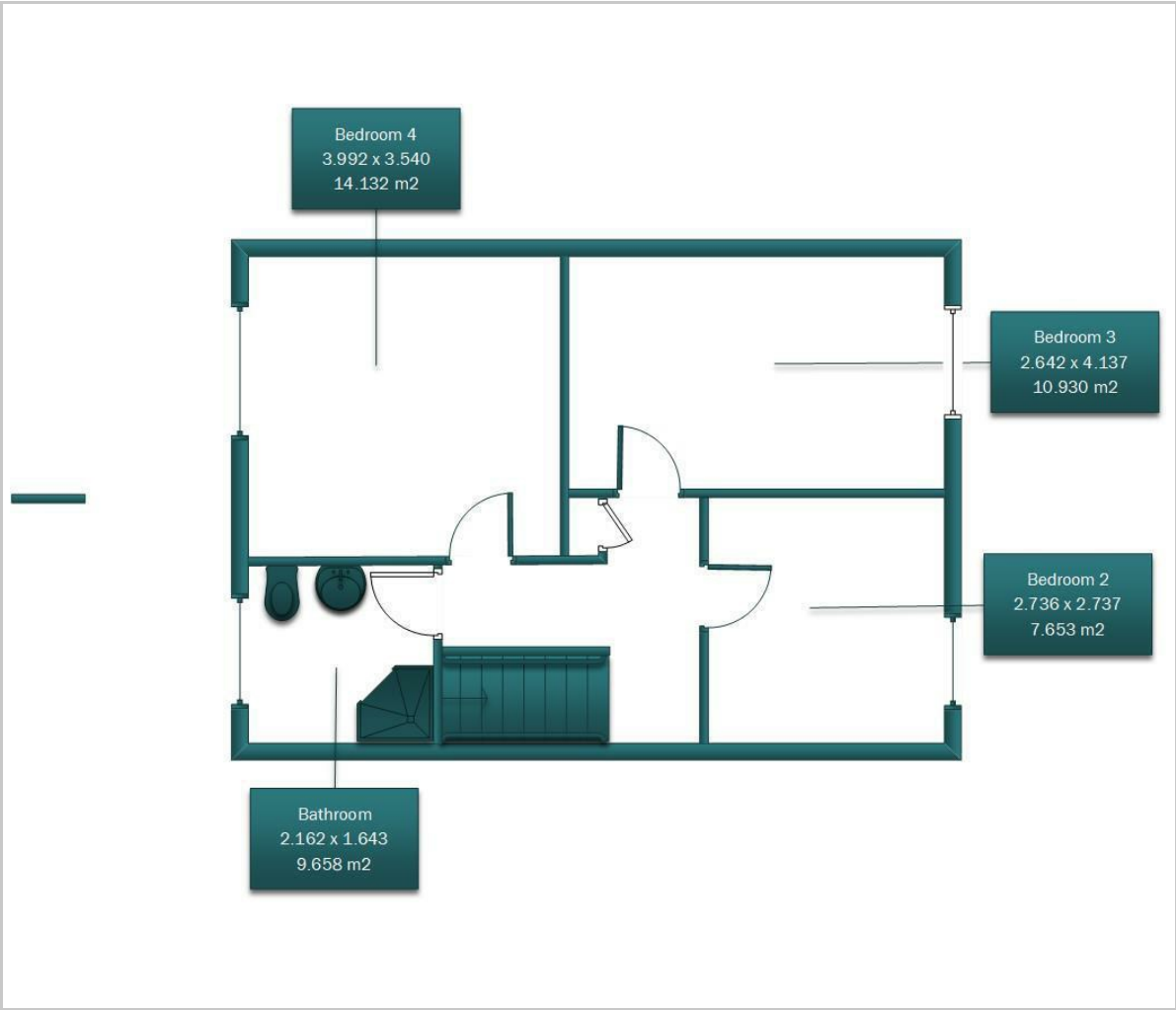


Deposit is £1,500 (equal to 5 weeks rent)
This can be paid anytime until your tenancy begins (EXCLUDING Holding Deposit)
Council tax band: C

Please refer to the fee's tab on our website (www.sallyhatcher.co.uk) for all information on fee's.



Floor Plan



Viewing

Please contact us on 01227 733888 if you wish to arrange a viewing appointment for this property or require further information.

These particulars, whilst believed to be accurate are set out as a general outline only for guidance and do not constitute any part of an offer or contract. Intending purchasers should not rely on them as statements of representation of fact, but must satisfy themselves by inspection or otherwise as to their accuracy. No person in this firms employment has the authority to make or give any representation or warranty in respect of the property.

Area Map



Energy Efficiency Graph

